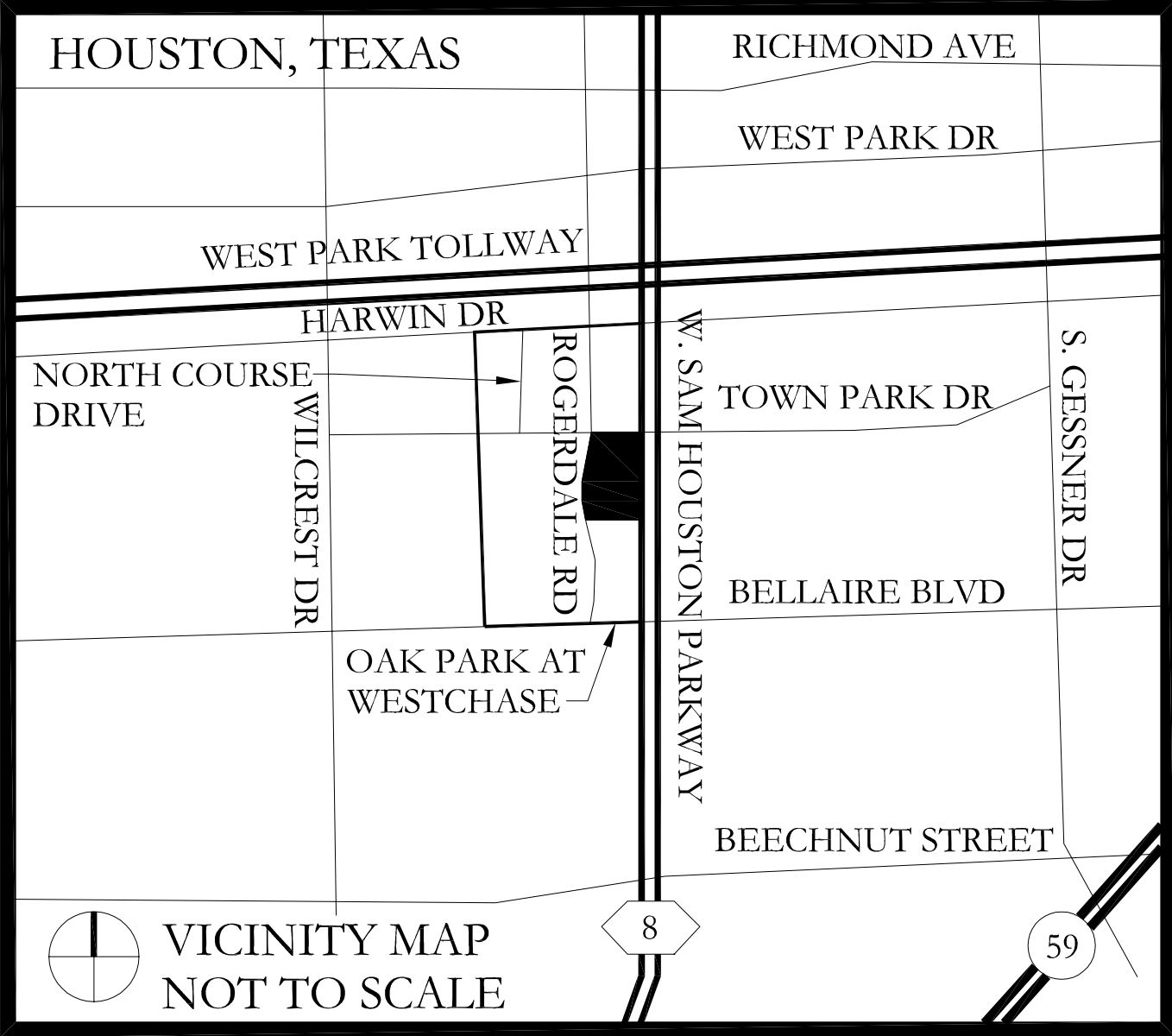
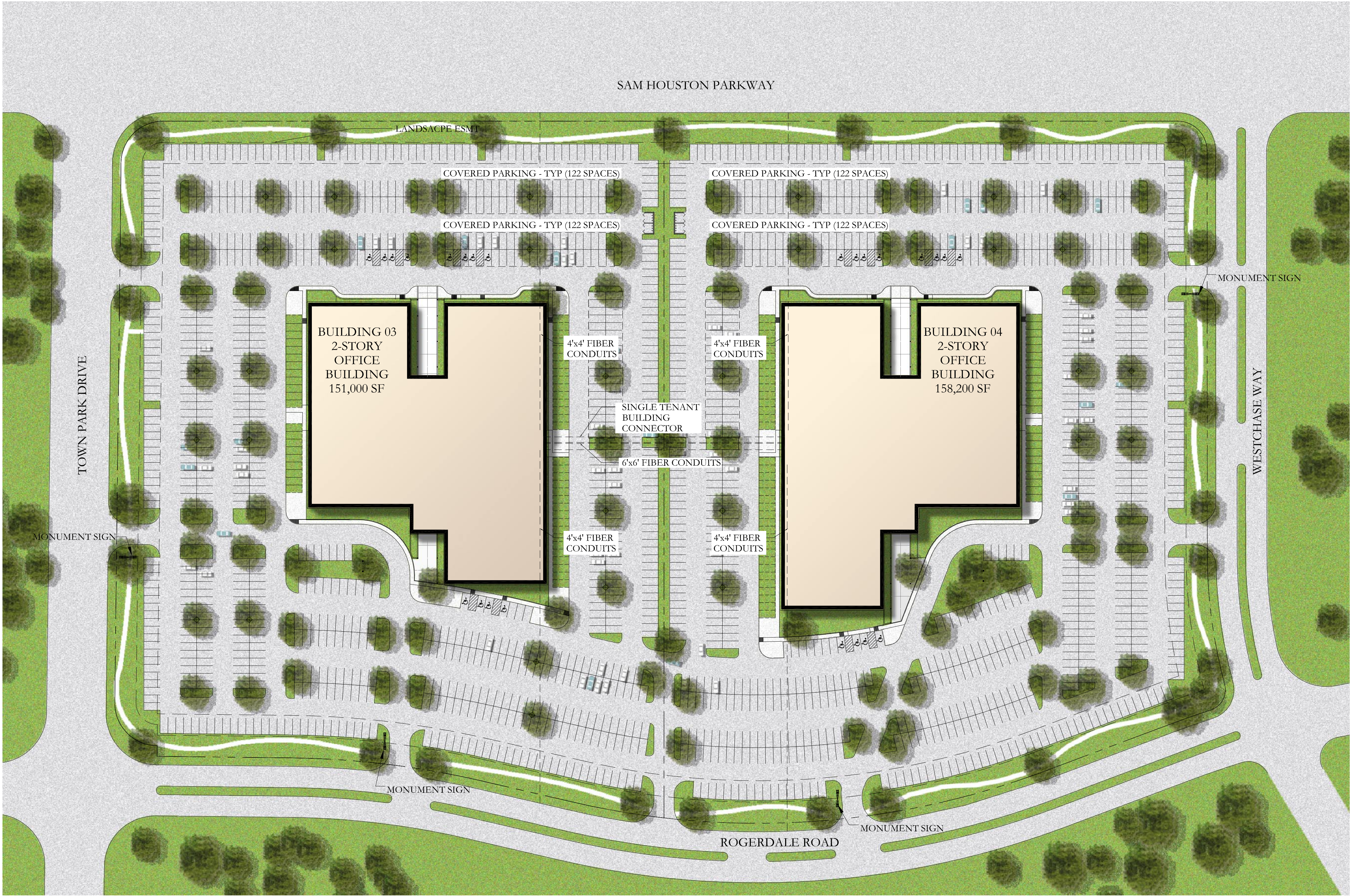


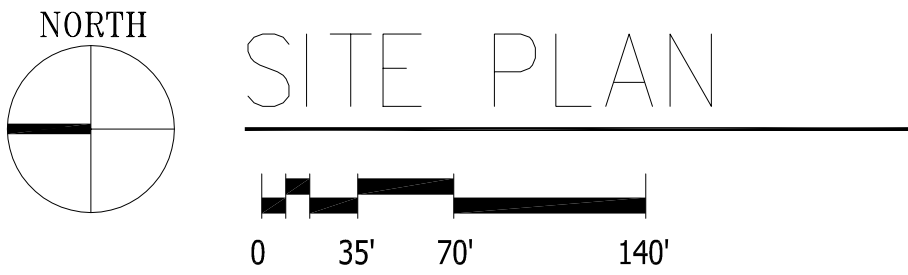
OAK PARK OFFICE CENTER III & IV - 309,200 sf

6001 & 6005 Rogerdale



PROJECT FEATURES:

- Site Area: 22.805 Acres
- Building 3: 11.351 Acres
- Building 4: 11.454 Acres
- Building Area: 309,200 sf
- Parking Bldg 3: 922 (6.1/1000)
- Parking Bldg 4: 944 (6/1000)
- Abundant Landscaping
- Offices to Suit
- 24-Hour Air-Conditioning/Heating
- Insulated Dual Pane Glass
- Exterior Lighting
- Energy Efficient Building Design



DATE: 02/05/07

MYERS, CROW & SAVIERS LTD.

www.myerscrow.com

713-465-8600
FAX 713-465-8705